

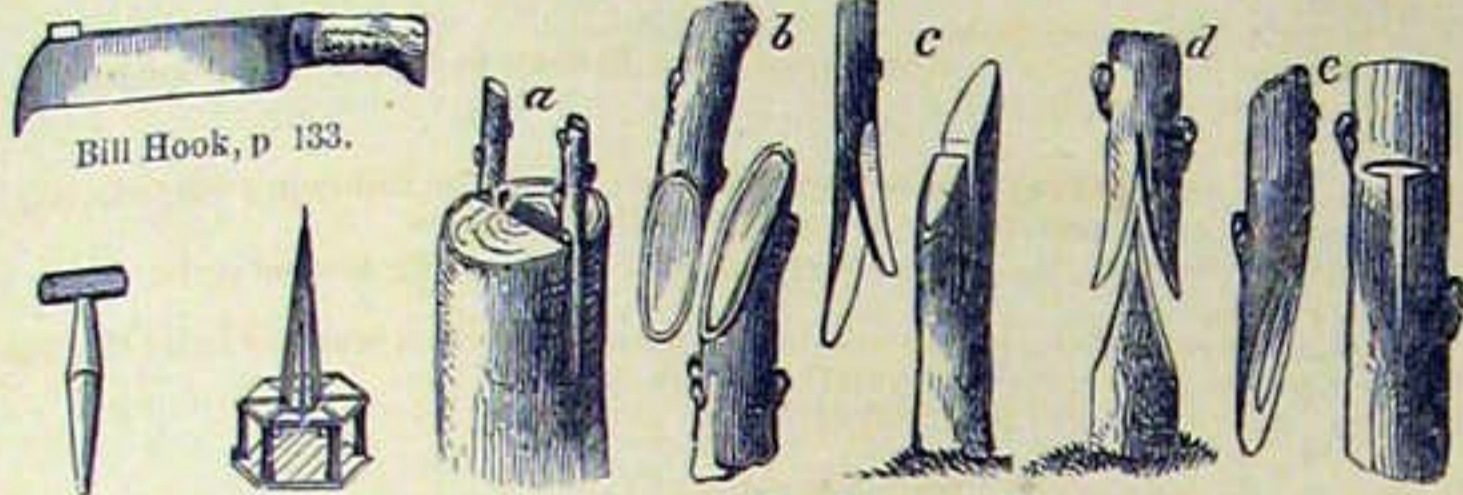
A CLASSIFIED SELECTION OF PICTORIAL ILLUSTRATIONS

FOR

WEBSTER'S UNABRIDGED DICTIONARY.

Where the explanation of the letters or figures in the cut is not given under the cut itself, it may be found under the same cut in the body of the work. For index to the classified heads of arrangement, see p. x.

AGRICULTURE AND HORTICULTURE.



Bill Hook, p. 133.

Dibble, p. 370. S. Stand, p. 1283.

Grafting, p. 583.

a, cleft-grafting; b, splice-grafting; c, whip or tongue-grafting; d, saddle-grafting; e, side-grafting.

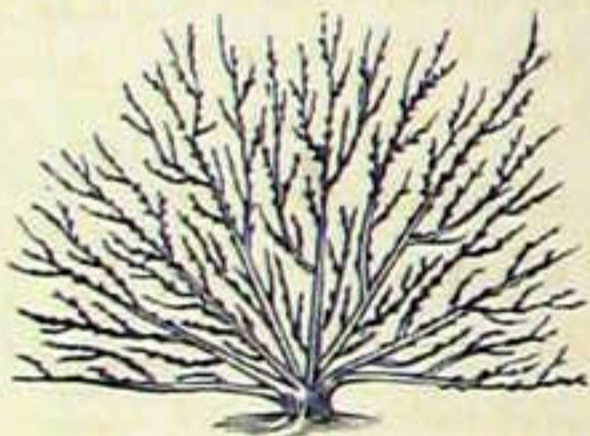


Inarching, p. 671.

Layers, p. 758.

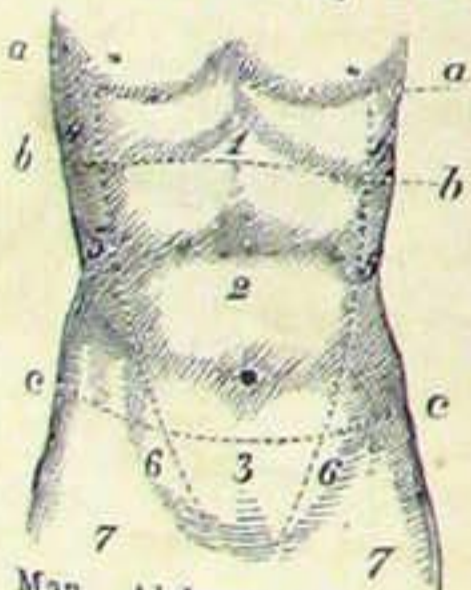
Quincunx, p. 1076.

Quenouille Training, 1074.



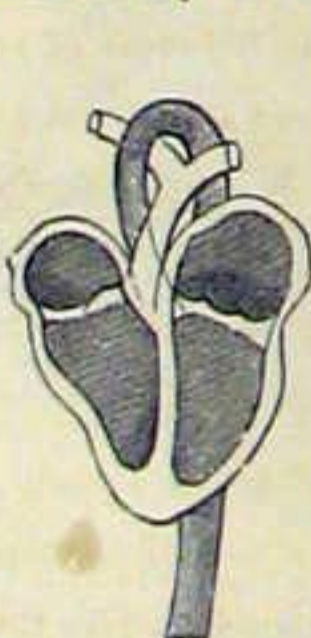
Fan and Horizontal Training, p. 1401.

ANATOMY, PHYSIOLOGY, PHRENOLOGY, &c.

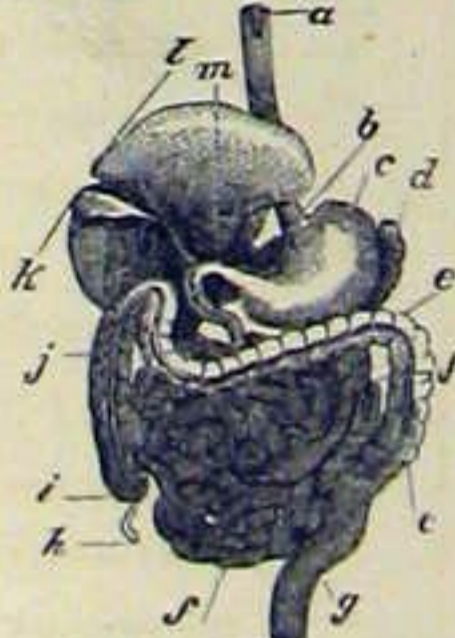


Man. Abdominal Region, p. 3.

Above the line *b b* (1), epigastric region; below *c c*, hypogastric region; space between *b b* and *c c* (2), umbilical region; space outside vertical lines, upper part (4 4), hypochondriac region; right and left of umbilical (2), lumbar regions (5 5); right and left of hypogastric region (6 6), iliac region; region of the pubis (3); 7 7, pelvis.



Aorta, p. 61.



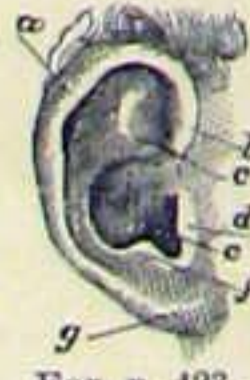
Digestive Apparatus of Man, p. 373.

a, esophagus; b, pancreas; c, stomach; d, spleen; e, colon; f, lesser intestine; g, rectum; h, appendix to caecum; i, caecum; j, larger intestine; k, biliary vesicle; l, liver; m, pylorus.



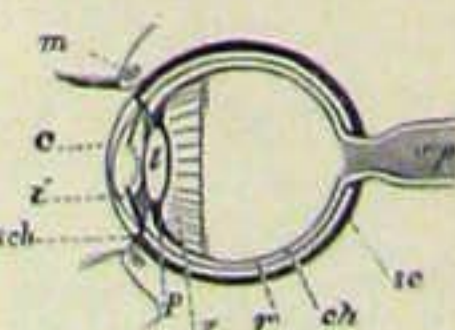
Ball and Socket Joint, p. 104.

a, helix; b, anti-helix; c, scapha or scaphoid (boat-like) fossa; d, tragus; e, anti-tragus; f, the concha; g, lobe or lobulus.

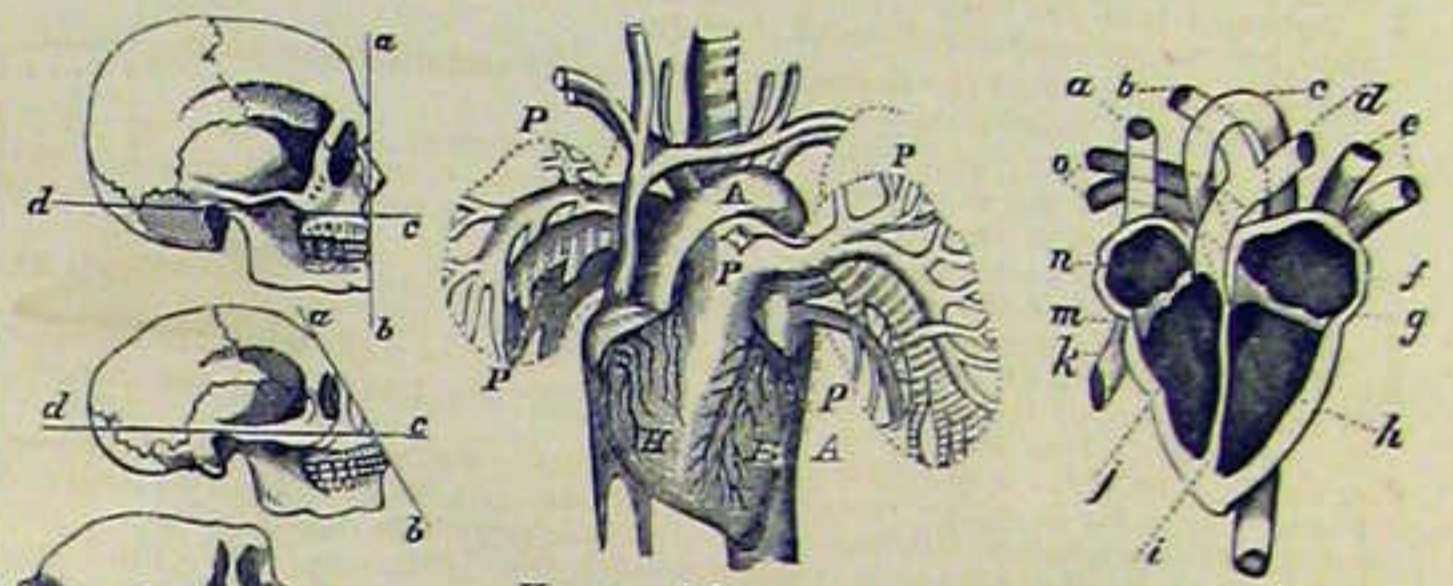


Ear, p. 423.

o p, optic nerve; sc, sclerotic or external coat of the eye; ch, choroid coat; r, retina; z, zonule of zinn; p, position of the Petition canal; sch, position of the canal of Schlemmi; i, iris, the opening in the center forming the pupil; c, cornea; m, Meibomian glands.



Eye, p. 488.



Facial Angles, p. 490. European, African, monkey.

Heart and Lungs, p. 614. Upper P P, pulmonary arteries; A, aorta; H H, right auricle and ventricle; lower P P, pulmonary veins.

Section of Heart, p. 614.

a, vena cava, sup.; b, pulmonary artery; c, aorta; d, pulmonary artery; e, pulmonary veins; f, left auricle; g, vena cava inferior; m, tricuspid valve; n, right auricle; o, pulmonary veins.

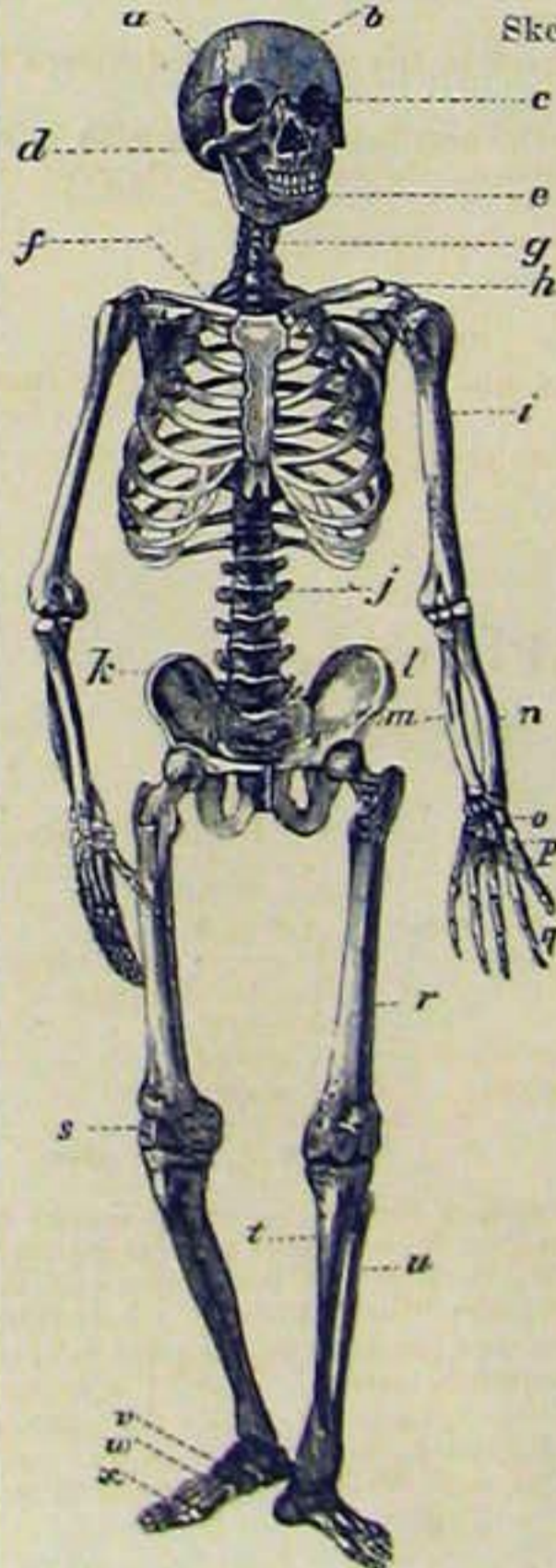


Skeleton of Perch, p. 1237.



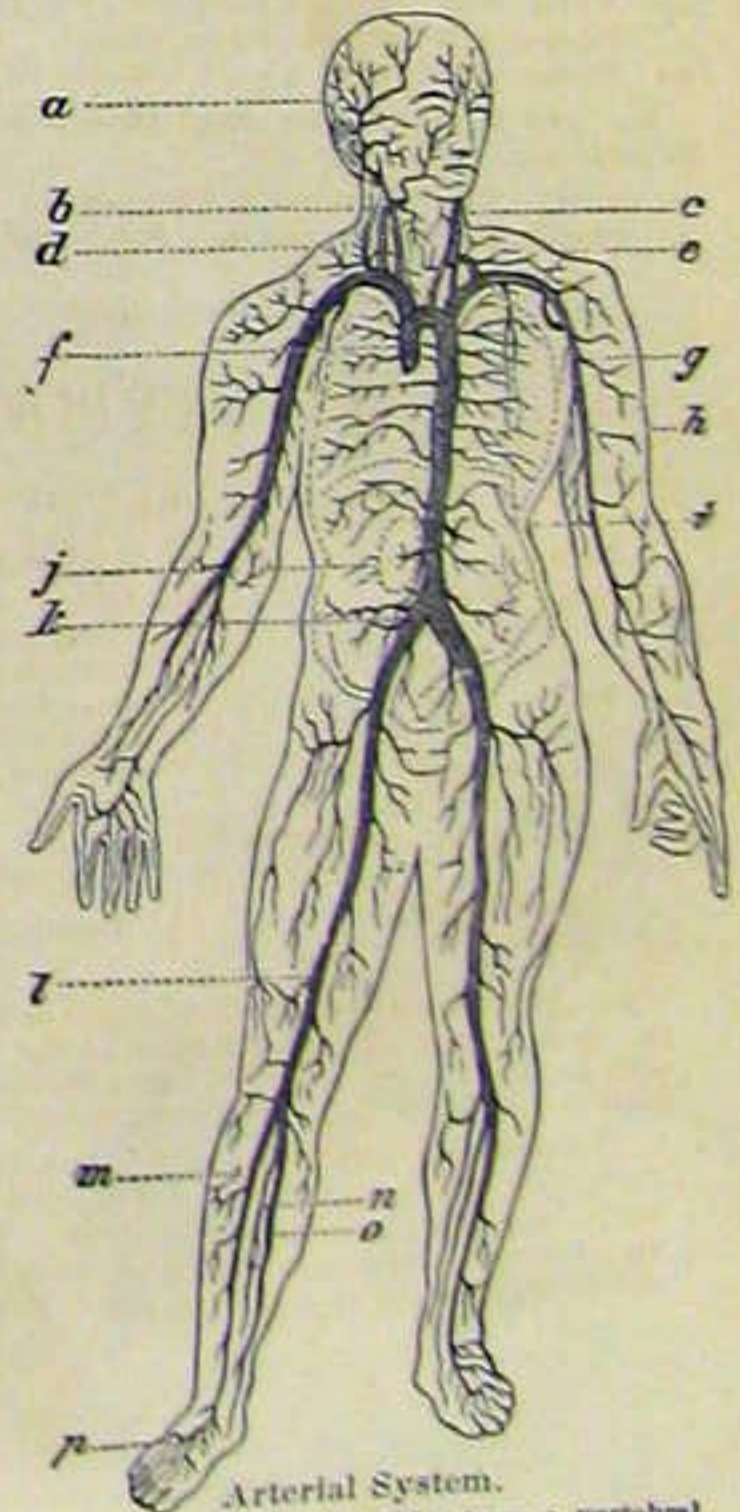
Larynx, p. 753.

A, lateral view of larynx; B, section of larynx; h, hyoid bone; th, thyroid cartilage; ar, arytenoid cartilage; cr, cricoid cartilage; tr, trachea; t, tongue; s, superior vocal cord; ir, inferior vocal cord; r, ventricle.



Skeleton of Man, p. 1237. Bony System.

a, parietal bone; b, frontal bone; c, orbit; d, temporal bone; e, lower jaw; f, clavicle; g, cervical vertebra; h, shoulder-blade; i, humerus; j, lumbar vertebra; k, l, ilia; m, ulna; n, radius; o, carpus; p, metacarpus; q, phalanges; r, femur; s, patella; t, tibia; u, fibula; v, tarsus; w, metatarsus; x, phalanges.



Arterial System.

a, temporal artery; b, carotid artery; c, vertebral artery; d, e, subclavian artery; f, aorta, or great artery; g, axillary artery; h, brachial artery; i, celliac artery; j, renal artery; k, iliac artery; l, femoral artery; m, posterior tibial artery; n, anterior tibial artery; o, peroneal artery; p, pedal artery.